



# DRILLING LOG



FROM : (m) 870 TO : (m) 6490 SCALE : 1/1000

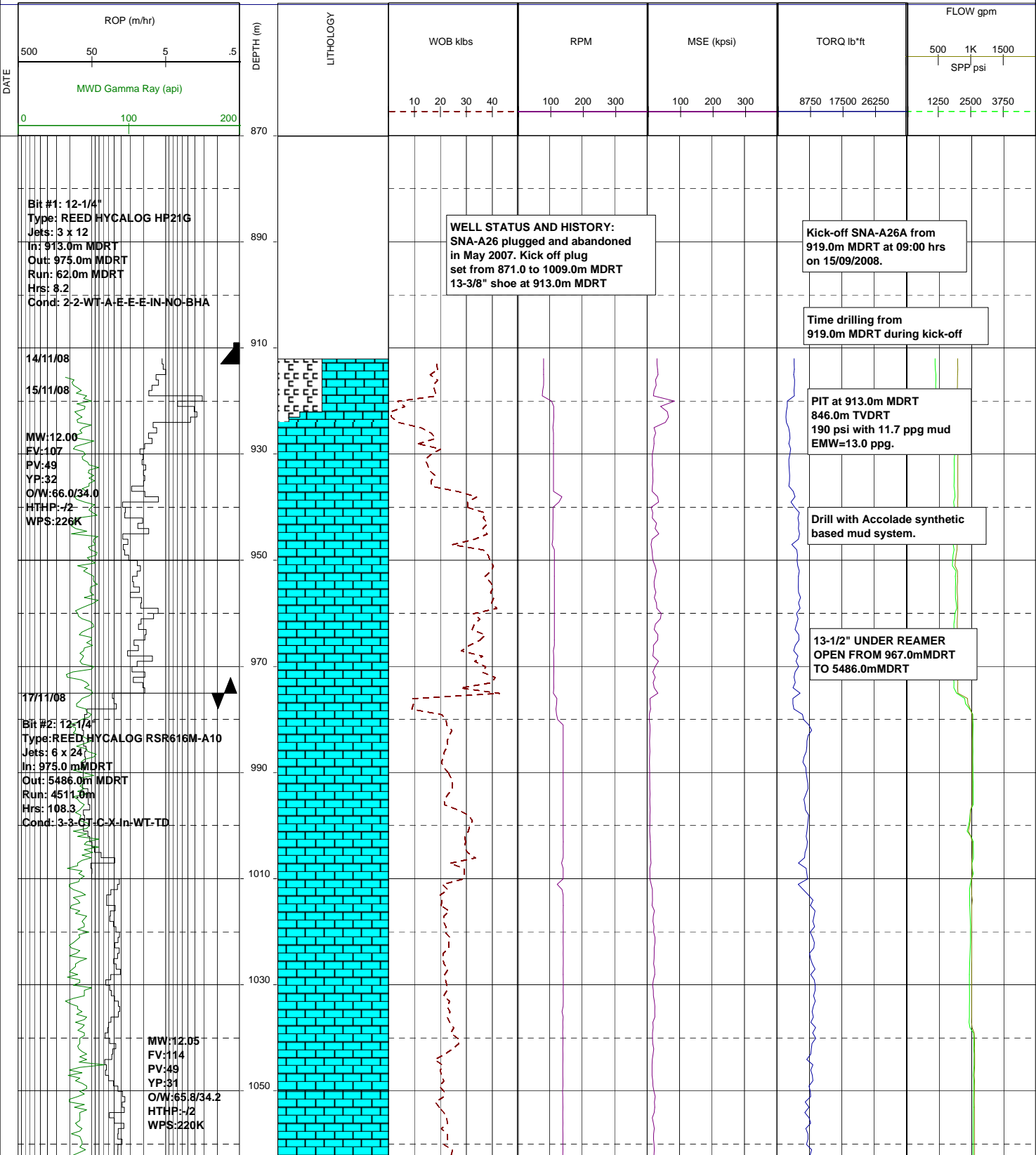
Well Name : Snapper A26A  
Company : ESSO AUSTRALIA LTD

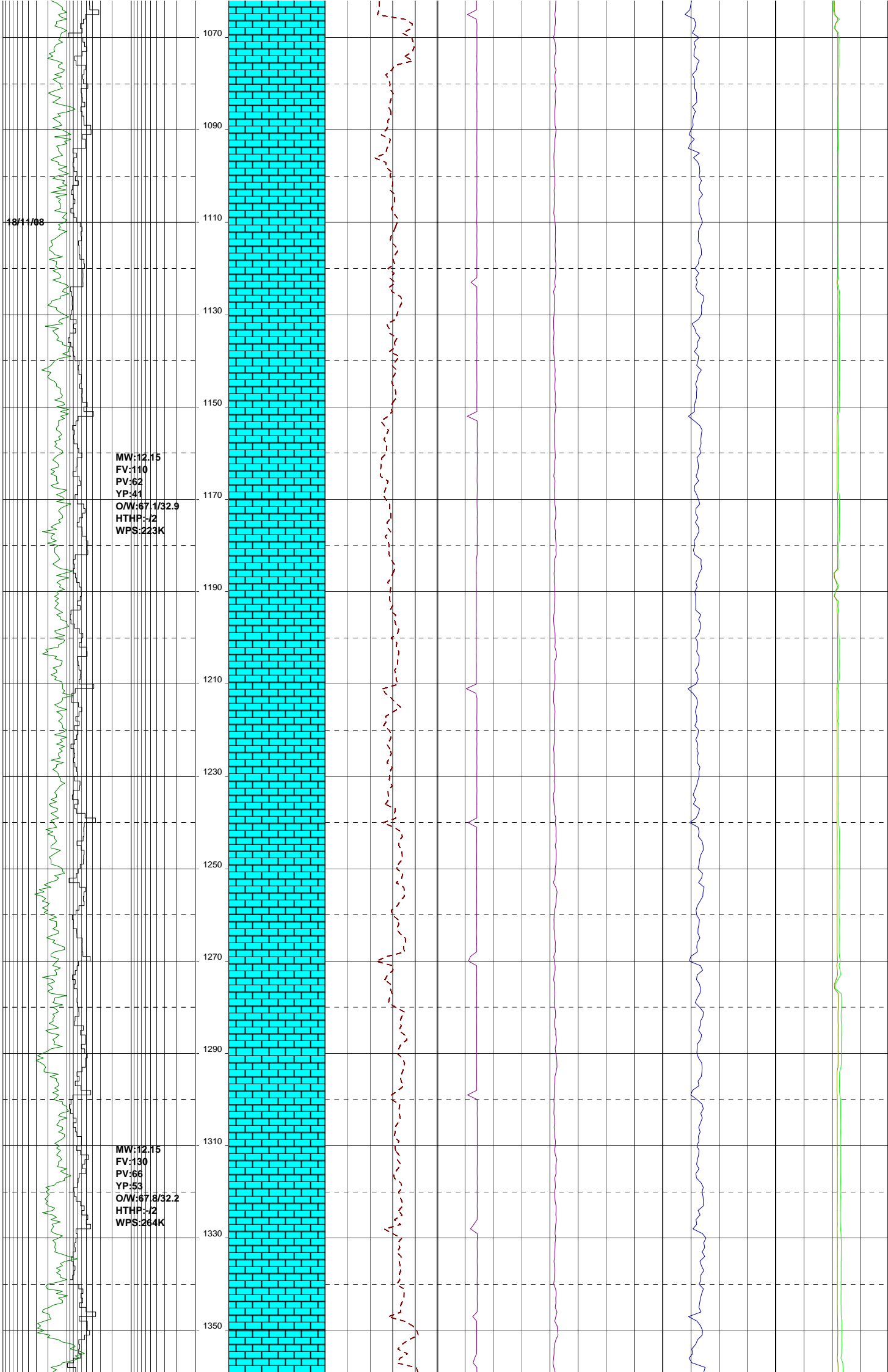
Country : AUSTRALIA

RT-MSL (m) : 41.68  
RT-SEABED (m) : 96.68

Final TD:  
Final TVD:

Generated by geoNEXT Package





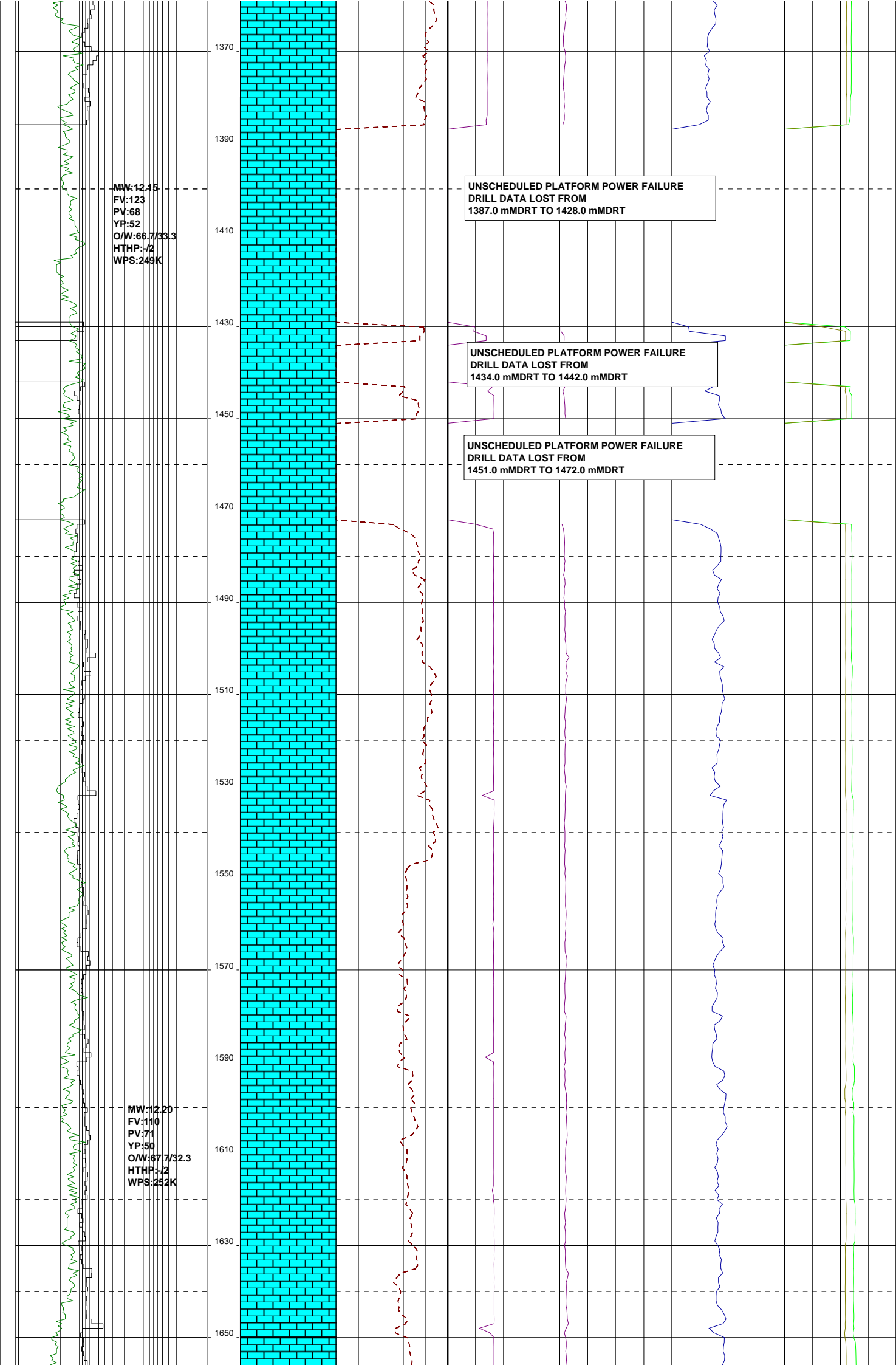
MW:12.15  
FV:123  
PV:68  
YP:52  
O/W:66.7/33.3  
HTHP:-/2  
WPS:249K

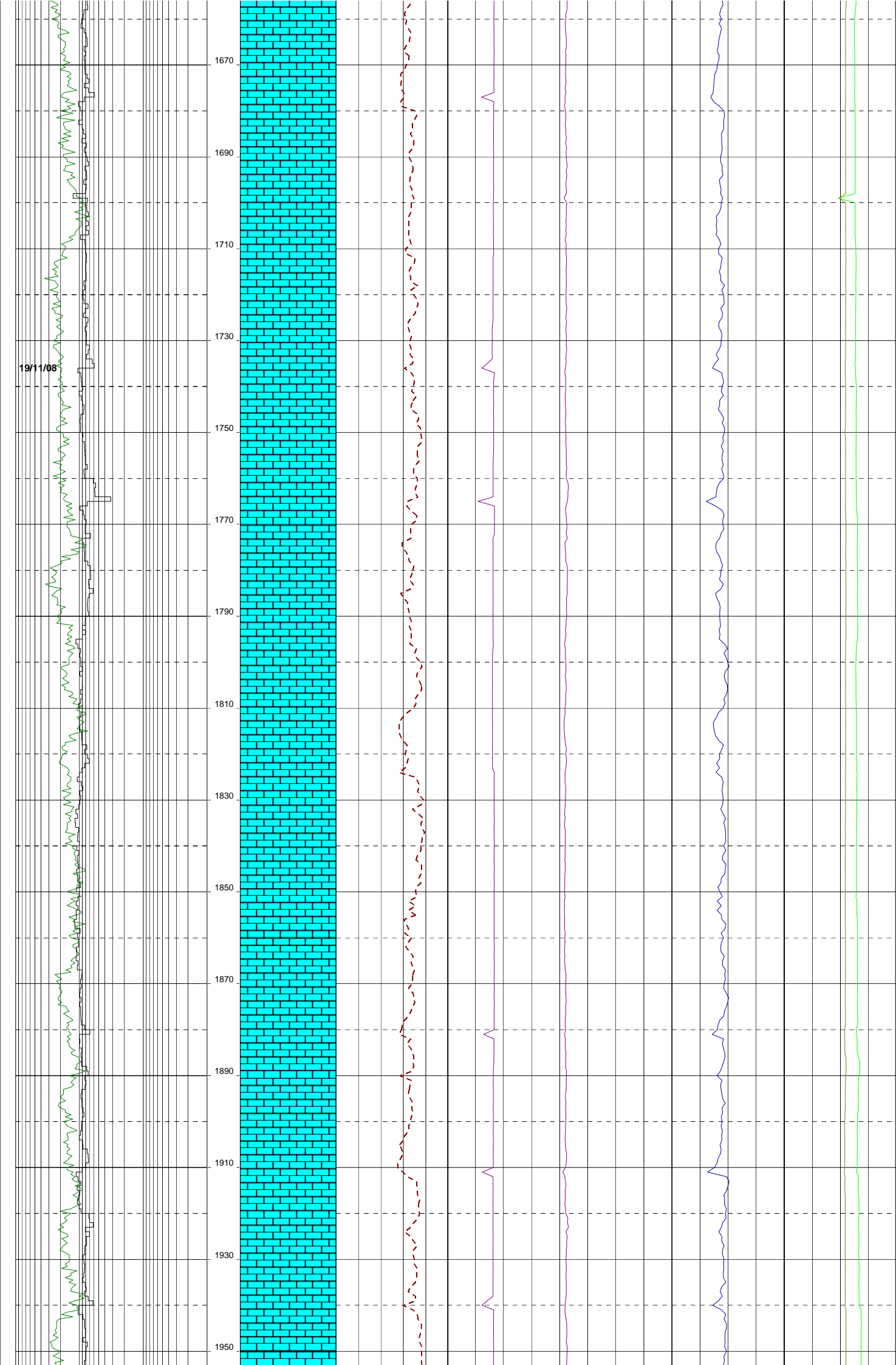
UNSCHEDULED PLATFORM POWER FAILURE  
DRILL DATA LOST FROM  
1387.0 mMDRT TO 1428.0 mMDRT

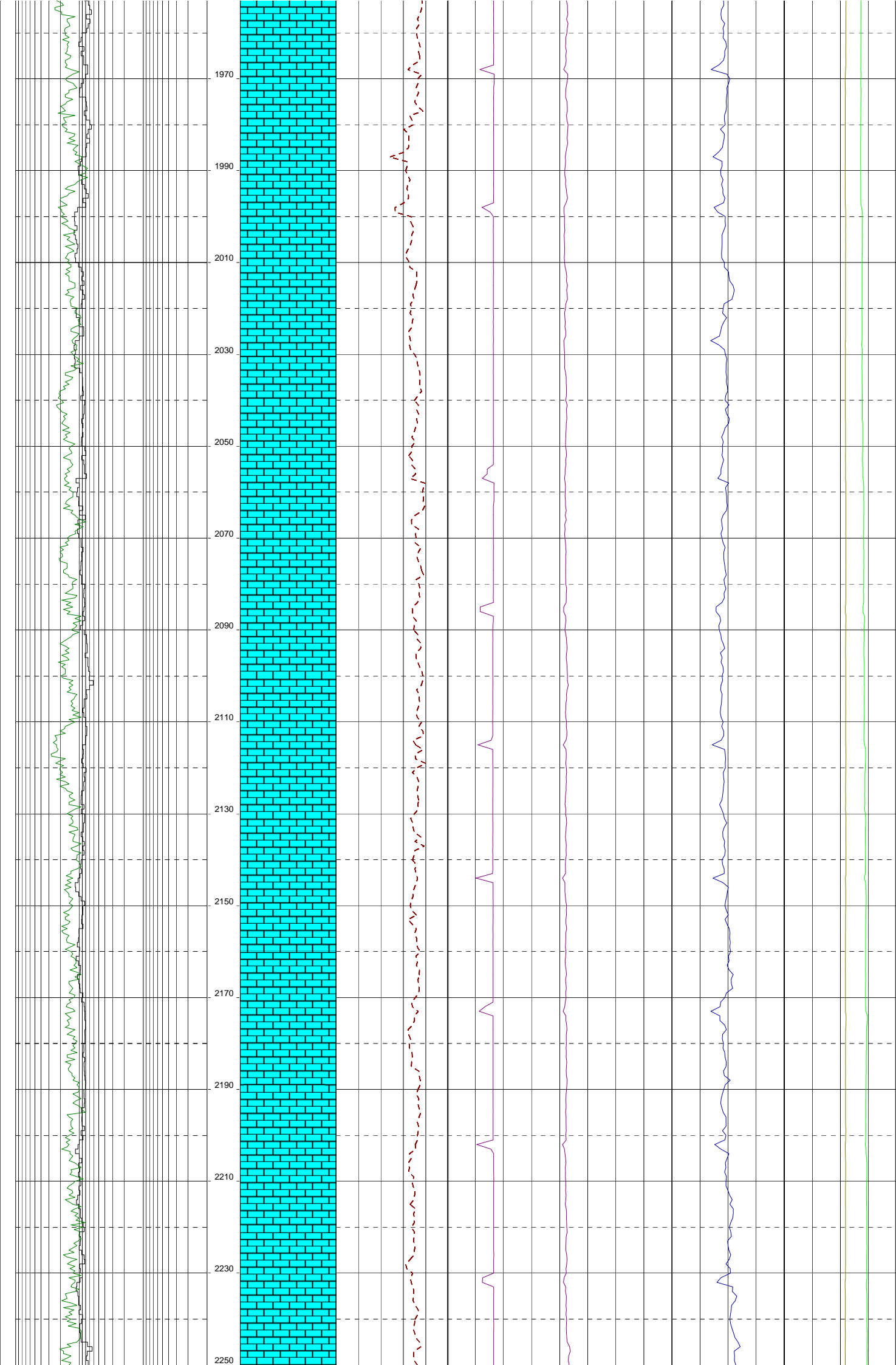
UNSCHEDULED PLATFORM POWER FAILURE  
DRILL DATA LOST FROM  
1434.0 mMDRT TO 1442.0 mMDRT

UNSCHEDULED PLATFORM POWER FAILURE  
DRILL DATA LOST FROM  
1451.0 mMDRT TO 1472.0 mMDRT

MW:12.20  
FV:110  
PV:71  
YP:50  
O/W:67.7/32.3  
HTHP:-/2  
WPS:252K



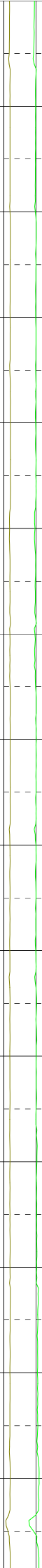
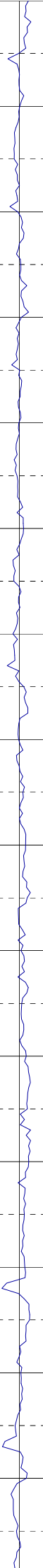
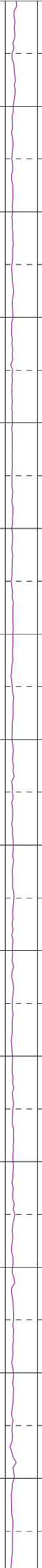
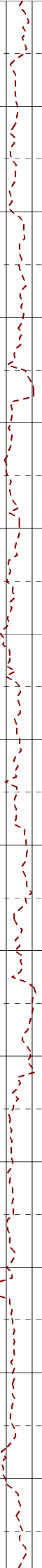
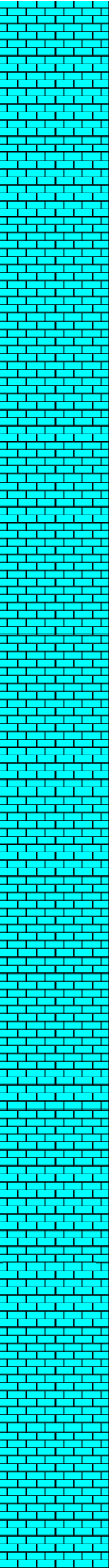




MW:12.20  
FV:155  
PV:73  
YP:51  
OW:72.1/27.9  
HTHP:-/2  
WPS:258K

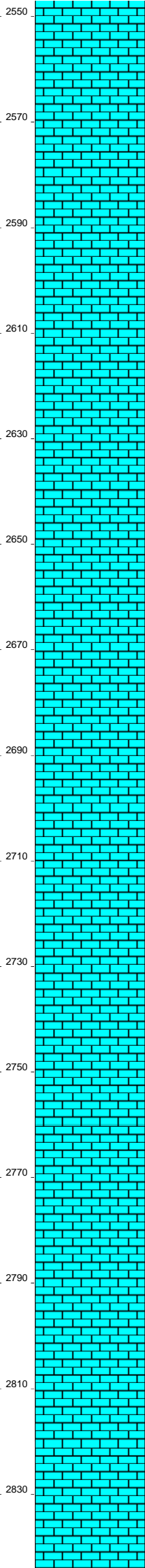
20/11/08

2270  
2290  
2310  
2330  
2350  
2370  
2390  
2410  
2430  
2450  
2470  
2490  
2510  
2530



MW:12.10  
FV:163  
PV:87  
YP:37  
O/W:71.7/28.3  
HTHP:~2  
WPS:268K

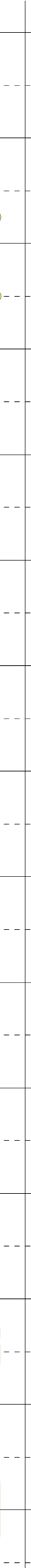
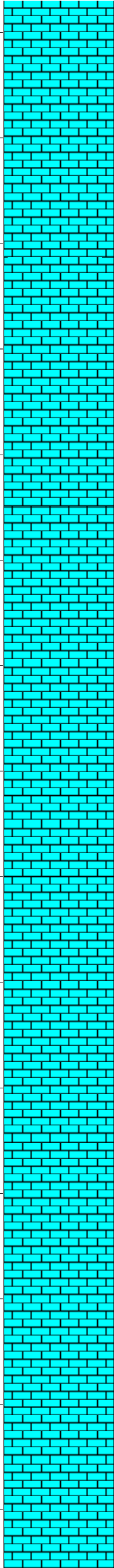
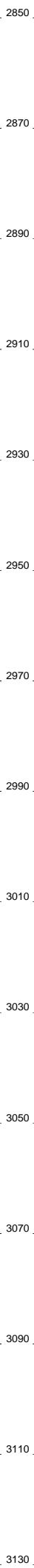
MW:12.15  
FV:168  
PV:77  
YP:54  
O/W:73.5/26.5  
HTHP:~2  
WPS:272K



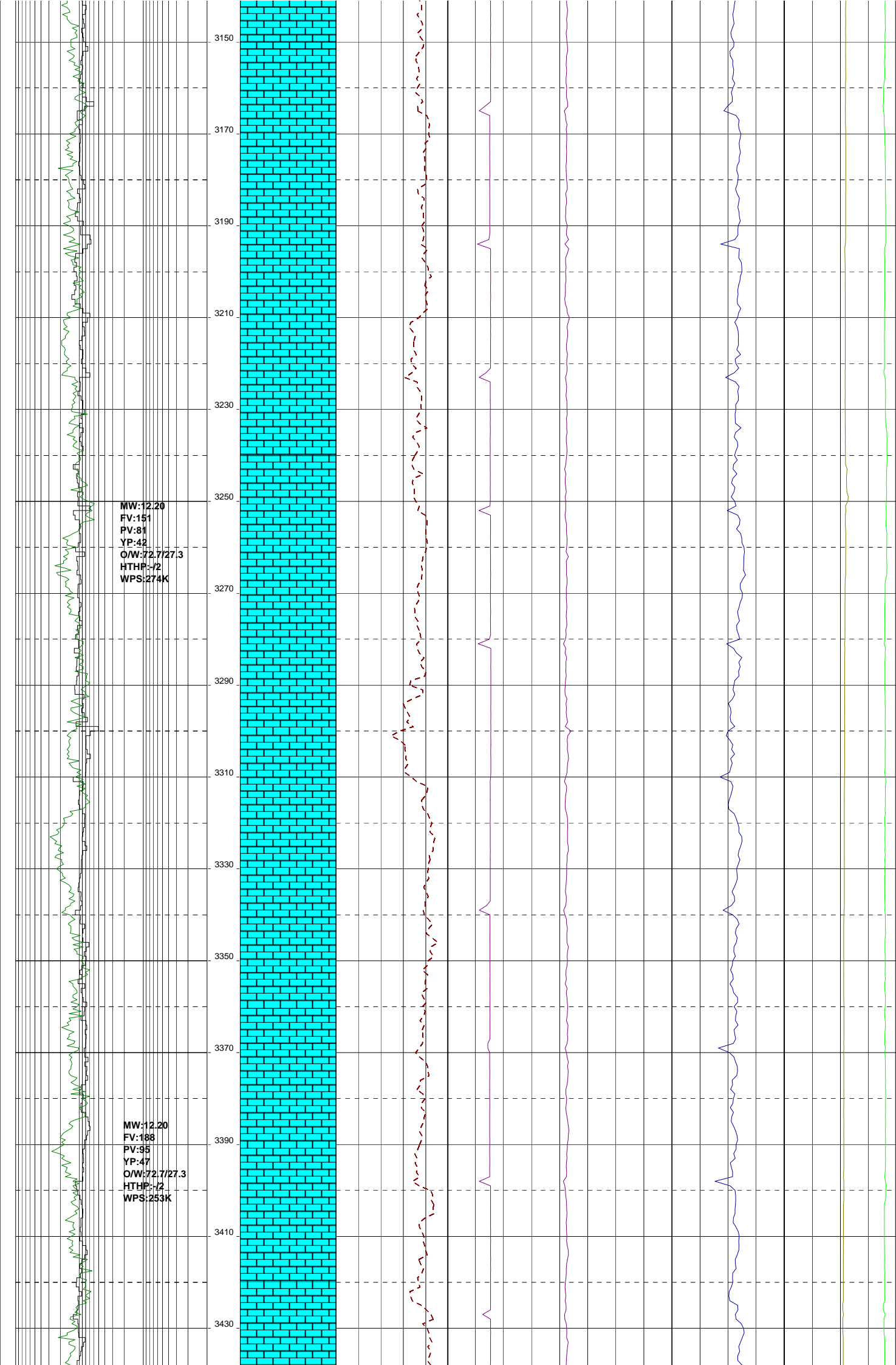
21/1/08

MW:12.20  
FV:195  
PV:69  
YP:54  
O/W:73.1/26.9  
HTHP:-/2  
WPS:245K

MW:12.15  
FV:164  
PV:70  
YP:38  
O/W:73.1/26.9  
HTHP:-/2  
WPS:274K



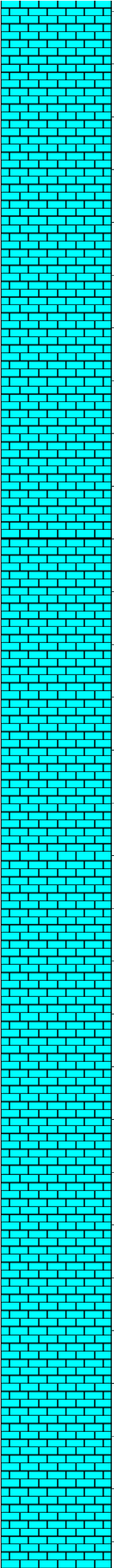


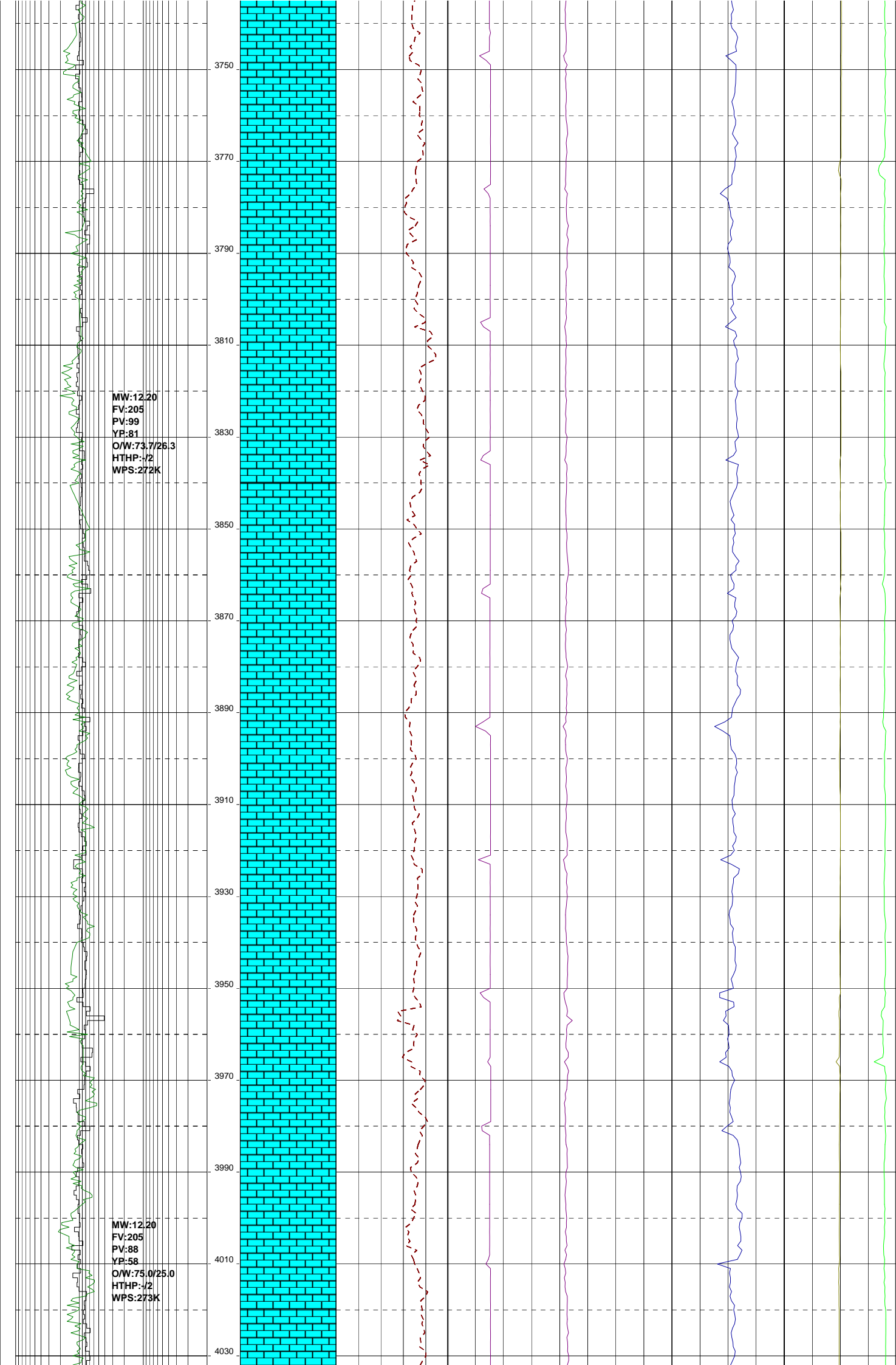


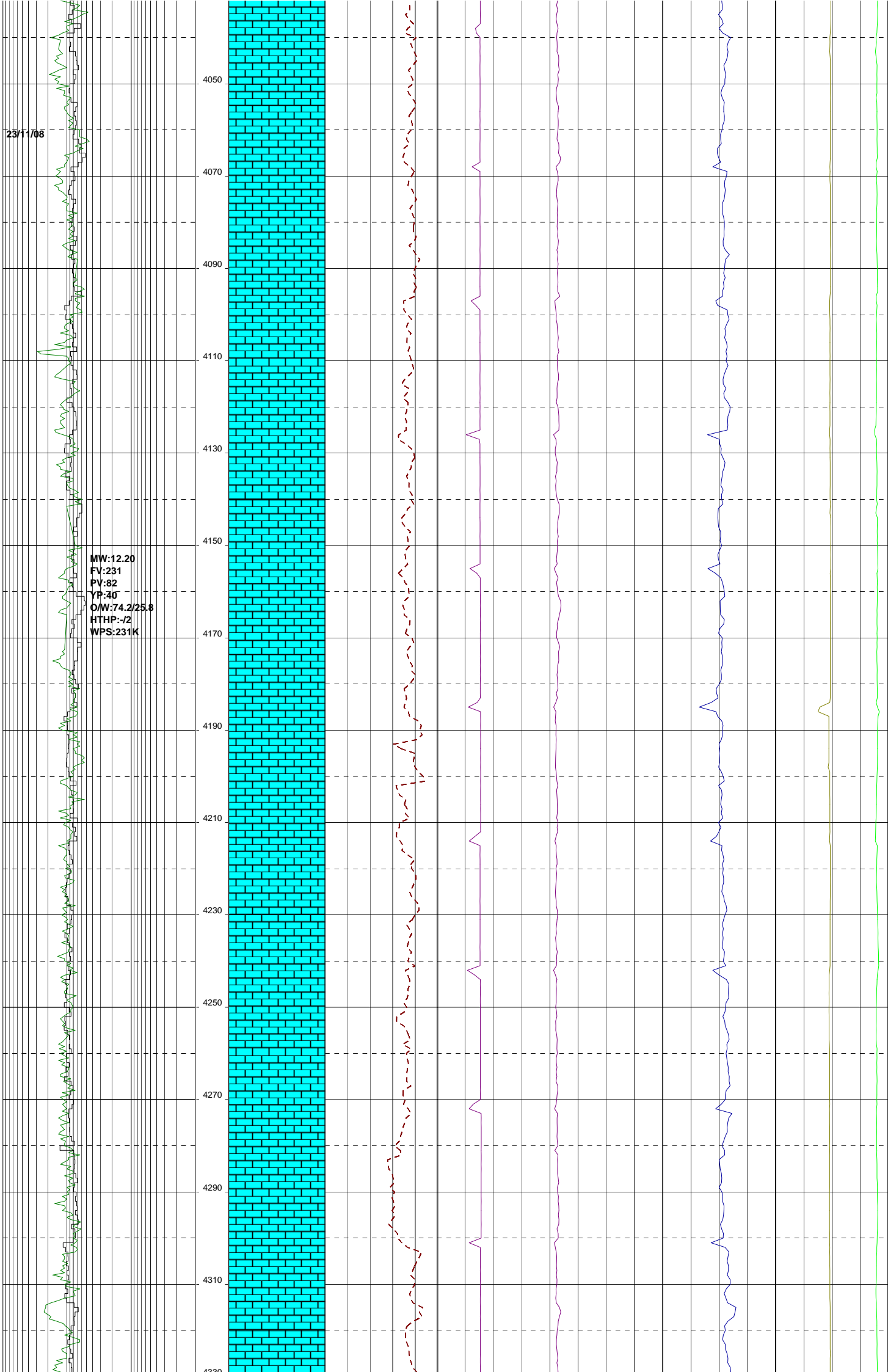
22/11/08

MW:12.20  
FV:187  
PV:92  
YP:71  
O/W:74.9/25.1  
HTHP:-/2  
WPS:276K

3450  
3470  
3490  
3510  
3530  
3550  
3570  
3590  
3610  
3630  
3650  
3670  
3690  
3710  
3730





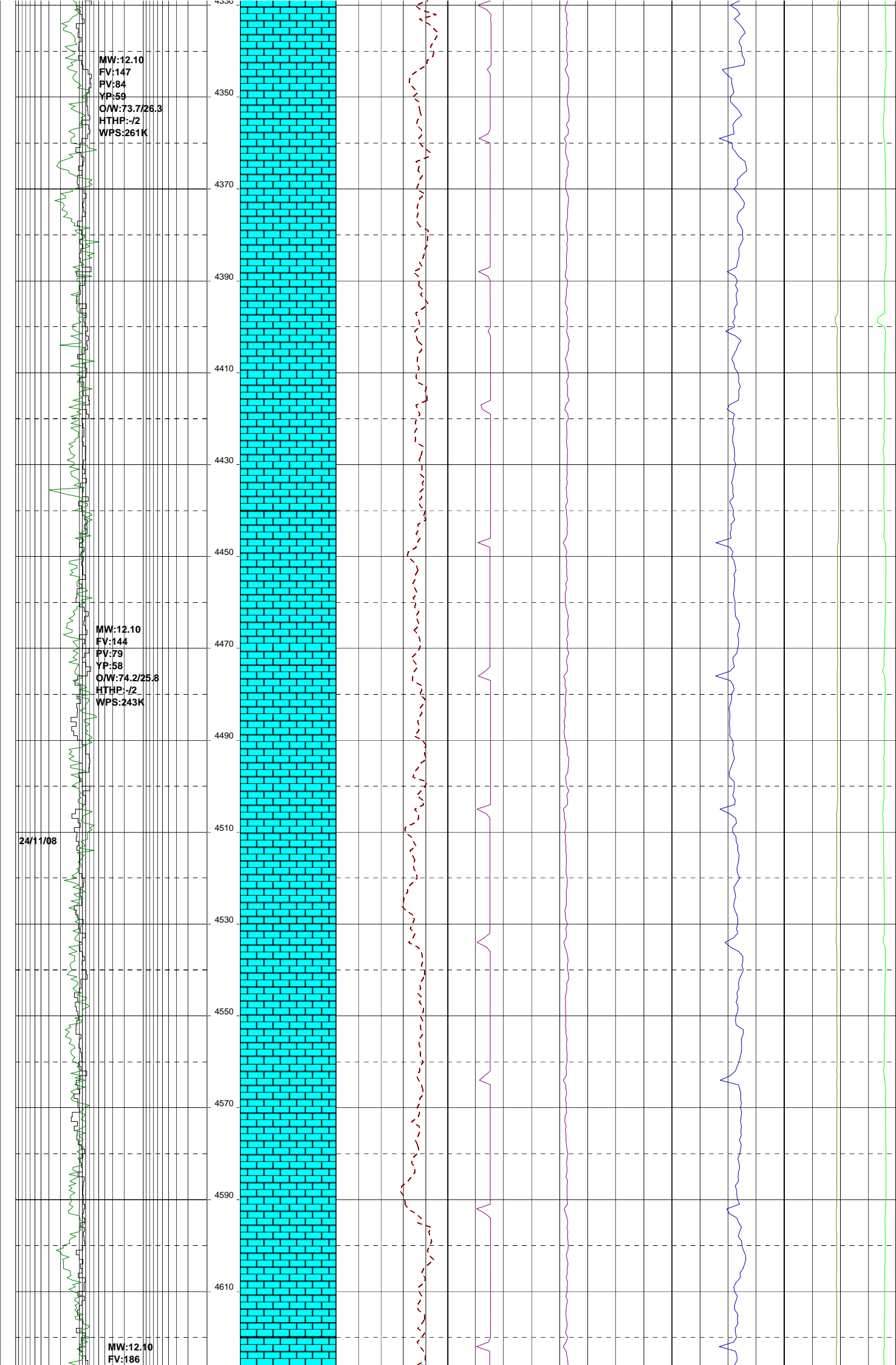


MW:12.10  
FV:147  
PV:84  
YP:59  
O/W:73.7/26.3  
HTHP:-/2  
WPS:261K

MW:12.10  
FV:144  
PV:79  
YP:58  
O/W:74.2/25.8  
HTHP:-/2  
WPS:243K

MW:12.10  
FV:186

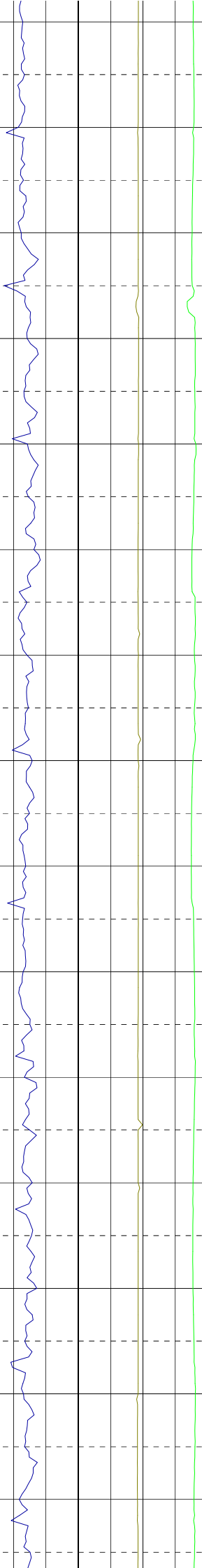
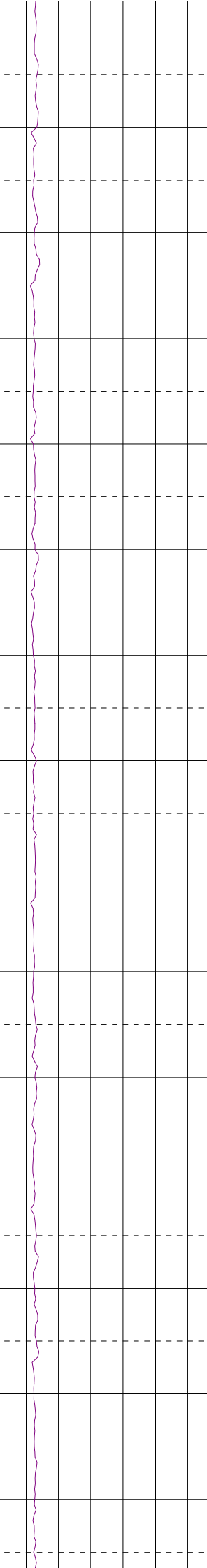
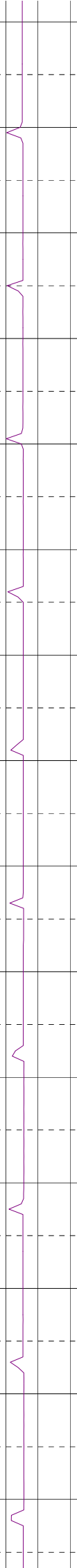
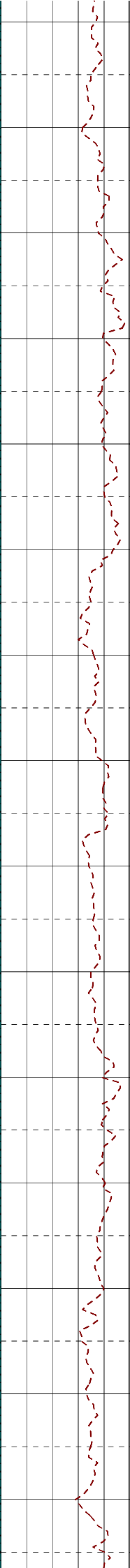
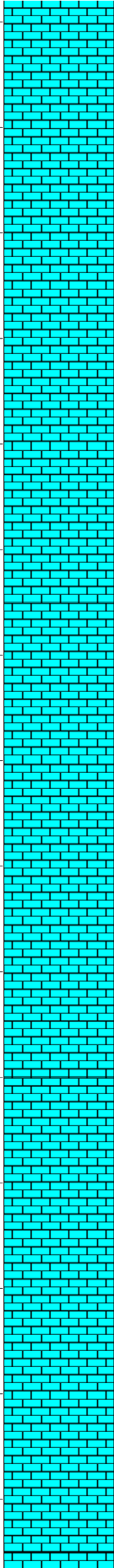
24/11/08

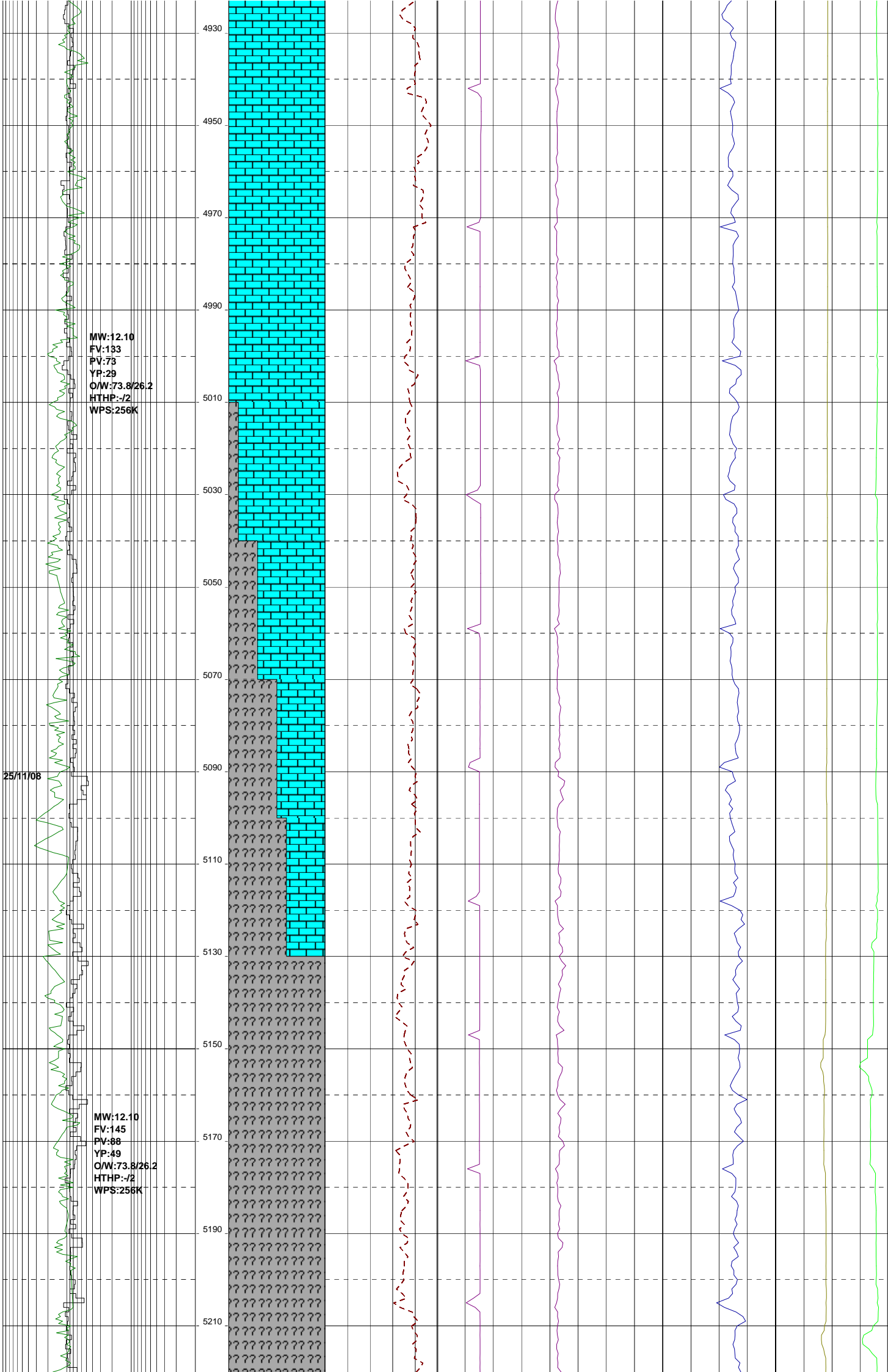


PV:80  
YP:47  
O/W:74.2/25.8  
HTHP:-/2  
WPS:268K

MW:12.10  
FV:130  
PV:90  
YP:62  
O/W:74.7/25.3  
HTHP:-/2  
WPS:273K

4630  
4650  
4670  
4690  
4710  
4730  
4750  
4770  
4790  
4810  
4830  
4850  
4870  
4890  
4910



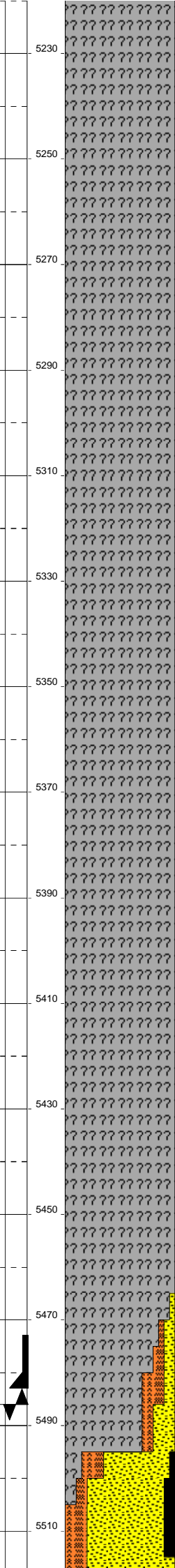


MW:12.10  
FV:135  
PV:80  
YP:37  
OAW:74.1/28.8  
HTHP:-/2  
WPS:254K

MW:12.20  
FV:133  
PV:81  
YP:49  
OAW:73.3/26.7  
HTHP:-/2  
WPS:263K

MW:10.8  
FV:67  
PV:28  
YP:12  
O/W:72.7/27.3  
HTHP:-/2  
WPS:258K

09/12/08



REBOOT AQUISITION COMPUTER  
DRILL DATA LOST FROM  
5308.0 mMDRT TO 5322.0 mMDRT

REBOOT AQUISITION COMPUTER  
DRILL DATA LOST FROM  
5354.0 mMDRT TO 5375.0 mMDRT

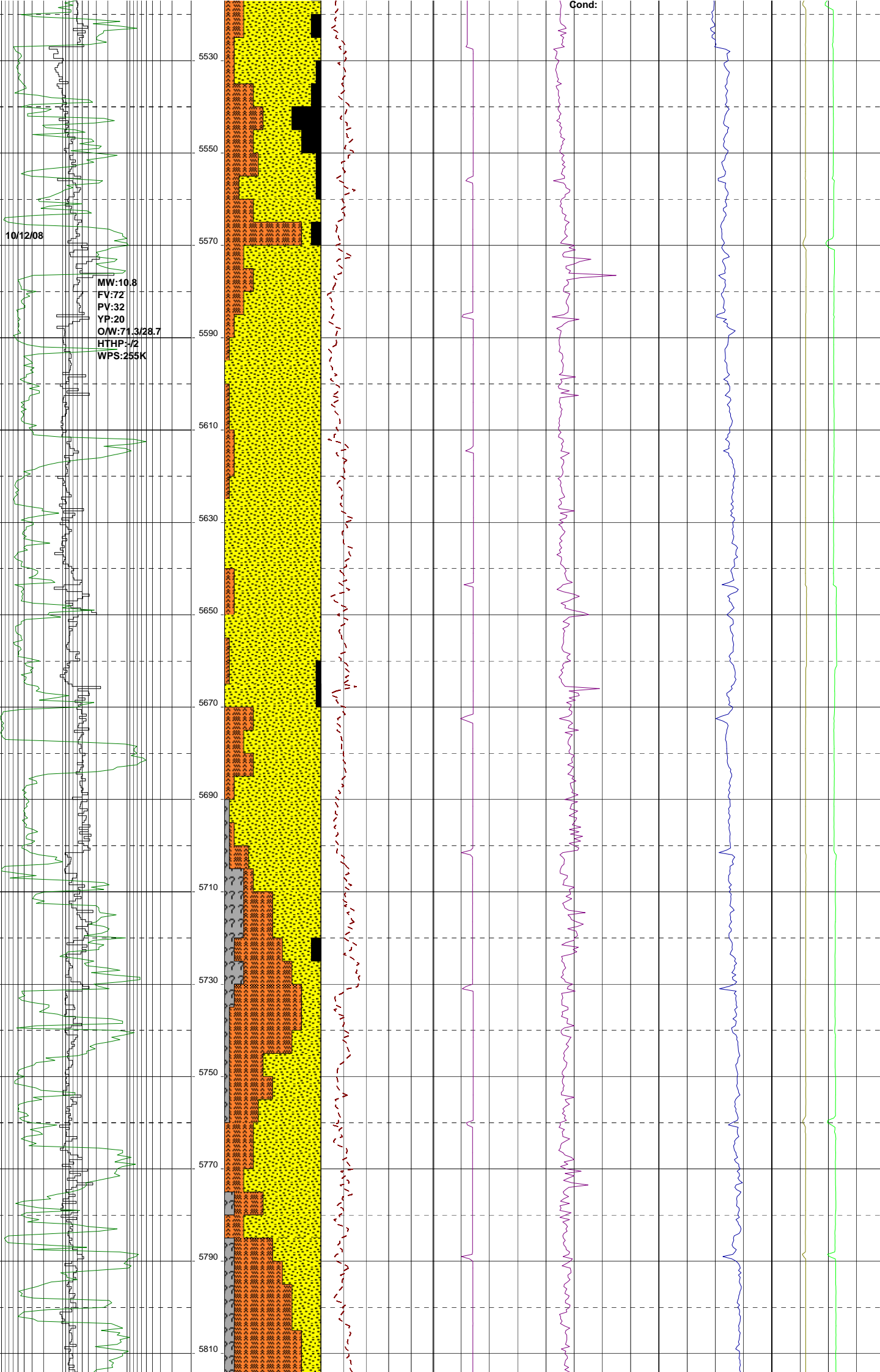
10-3/4" Casing at  
5482.9m MDRT

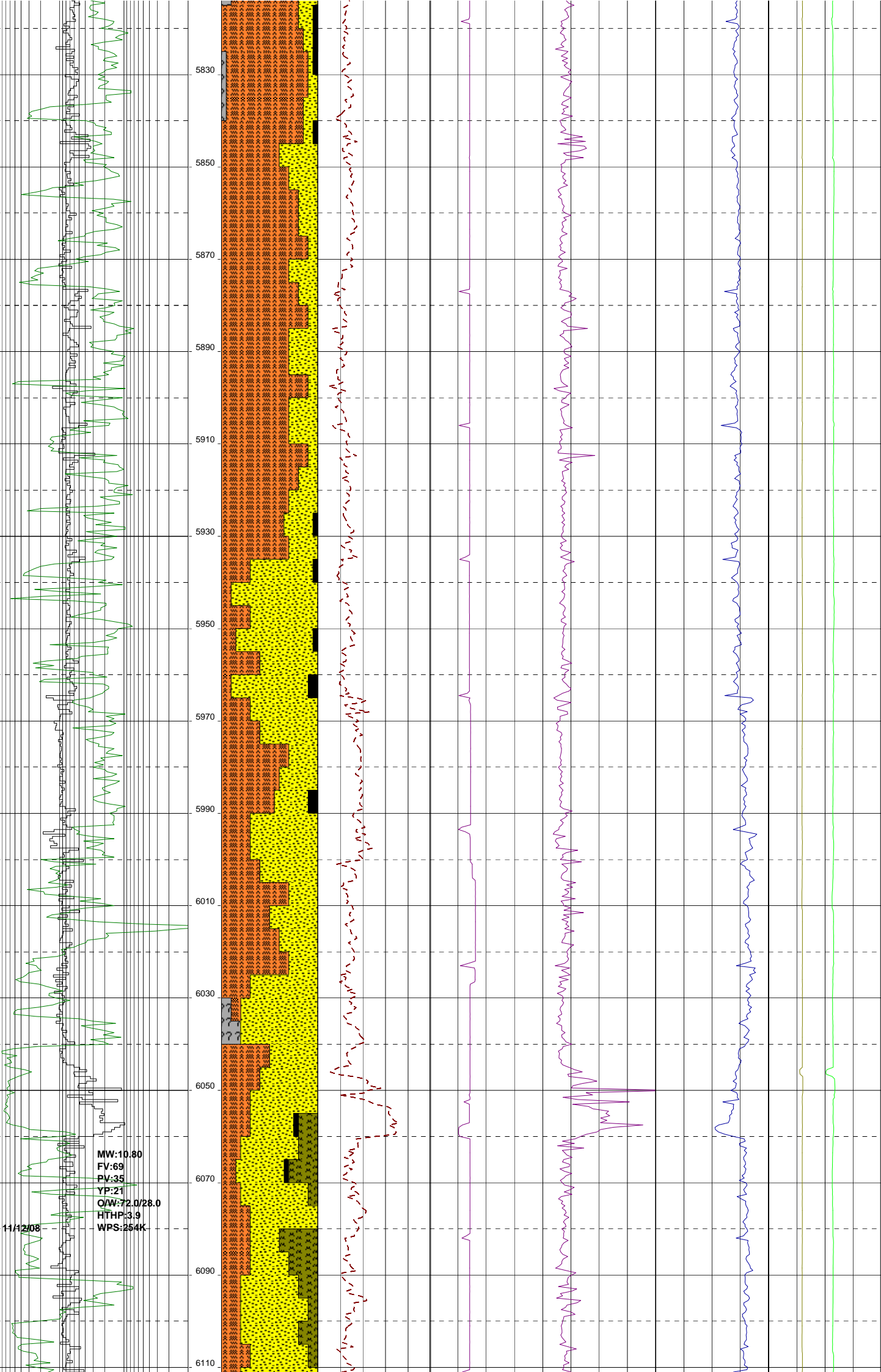
Jug test @ 5489.0  
mMDRT 832 psi for 15  
mins w/ 10.8 ppg mud  
EMW 14.0 ppg

Bit #4.9-1/2"  
Type:Reed Hycalog RSR616M-B4  
Jets: 6 x 20  
In: 5486.0m MDRT  
Out:  
Run:  
Hrs:









MW:10.80  
FV:68  
PV:35  
YP:19  
O/W:72.0/23.0  
HTHP:4.0  
WPS:254K

MW:10.80  
FV:71  
PV:32  
YP:18  
O/W:72.2/27.8  
HTHP:4.4  
WPS:261K

6130  
6150  
6170  
6190  
6210  
6230  
6250  
6270  
6290  
6310  
6330  
6350  
6370  
6390

